

Robert Stanley portfolio: ART PERIODS



Expressionism
1962-1966



Expressive
Geomorphics
1966-1968



Minimalist Mysteries
1968-69



Juxtapositions
1970-1979



Grid | Nature
1979-1980



Boundaries | Borders
1982-1992



The Empty Center
—Chaos and Order
1993-2015



Timeline
2015-2017



Progression
2017-

Introduction

Styles change. Their occurrence is often a mystery. The something that happens, for nothing changes without a new force of some kind happening, might either be known or might be subconscious. An early influence was knocked sideways upon seeing trees on a lake shore on a dark night, combined with the pressure of graduate school to come up with something. Another stylistic transformation flared with the restretching of an old canvas placing raised edges from the previous stretcher edge inside the new canvas. Was that inspiration purely visual? Likely not, but rather a resonance with an unconscious urge.

Through all the changes, known causes or not, a thread appears. "You can never step into the same river twice." Change is constant in our environment, yet an order, a pattern suggests itself. Cosmos and Chaos, Order and Randomness jostle each other throughout each style, visually and conceptually.

Contents

Expressionism *1962-1966*.....5

Expressive/Geomorphics *1966-1968*.....6

Minimalist Mysteries *1968-69*.....7

Juxtaposition *1970-1979*.....8

Grid | Nature *1979-1980*.....12

Boundaries | Borders *1982-1992*.....14

The Empty Center—Chaos and Order *1993-2015*.....18

Timeline *2015-2017*.....24

Progression *2017—*.....26

Expressionism

Starting out, the dominant style was the Abstract Expressionists. This early work carried the energy of the brush, but sought more order.

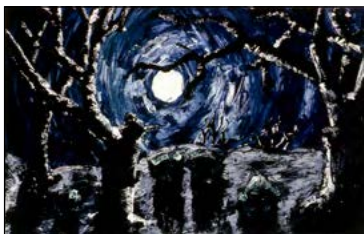
1962-1966



City #2, printing ink on paper, 15 x 23 in., 1962



Lent, oil and pastel on paper, 12 x 17 in, 1962



Quiet Night, acrylic on board, 12 x 18 in., 1963

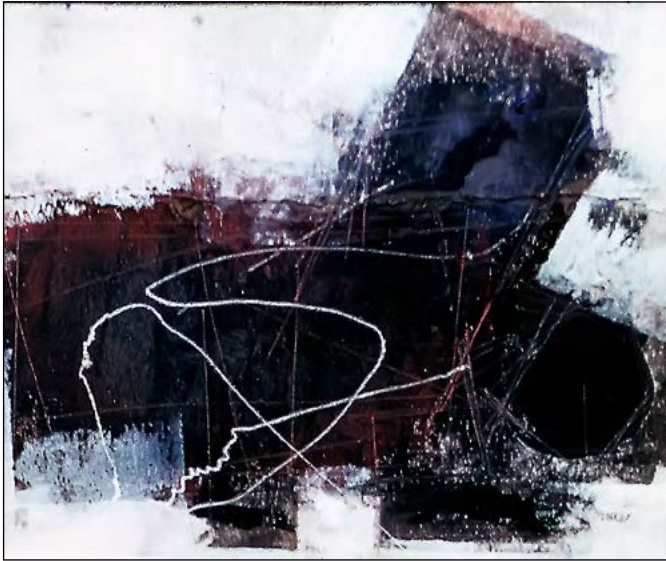


Strata, oil on paper, 11 x 14 in., 1966

*Geometric shapes play against and with expressive
gesture and washes*

Expressive/Geomorphics

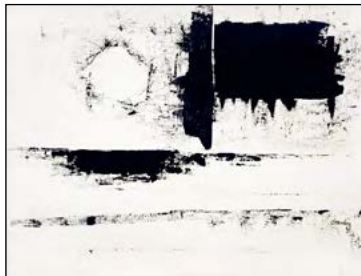
1966-1968



Traceries, oil on cardboard, 13 X 11 in., 1966



*Bicyclist, oil on board,
18 x 20 in, 1966*



*Winter, oil on canvasboard,
18 x 24 in., 1968*



*Time, oil and paper on canvas
board, 18 x 24 in., 1968*

Geometric shapes now invite entrance and participation via iconography, color and tone.

Minimalist Mysteries 1968-69



*Hallway, acrylic on canvas,
38 x 44 in., 1968*



*Blue Corner, acrylic on canvas,
38 x 42 in., 1968*



*Trees I, acrylic,
30 x 38 in., 1968*



*Genesis - Two Figures, acrylic,
28 x 42 in., 1969*



*Three Doorways Figures, acrylic
50 x 32 in., 1969*

Juxtaposition

Phenomena, both real and imagined exist as the mind creates, juxtaposed, without the limits of time, and questioning meaning.

1970-1979



Jarring, acrylic, 50 x 36 in.,
1970



Signs, acrylic, three joined canvasses, 40 x 48 in., 1970



Portrait, acrylic, 34 x 36 in , 1971



Man Walking, acrylic, 6 x 40 in., 1971



In Honor Of, acrylic, 34 x 42 in., 1971



Studio (Corner) Dream, acrylic, 42 x 36 in., 1973



Studio Dream (Bag), acrylic, 36 x 42 in., 1973



Y, acrylic, 42 x 36 in., 1974

Juxtaposition (cont'd)



Views, acrylic, 36 x 48 in., 1974



Portrait of the Artist (Work), acrylic, 34 x 42 in., 1974



Here There Then Now, acrylic, 48 x 72 in., 1976

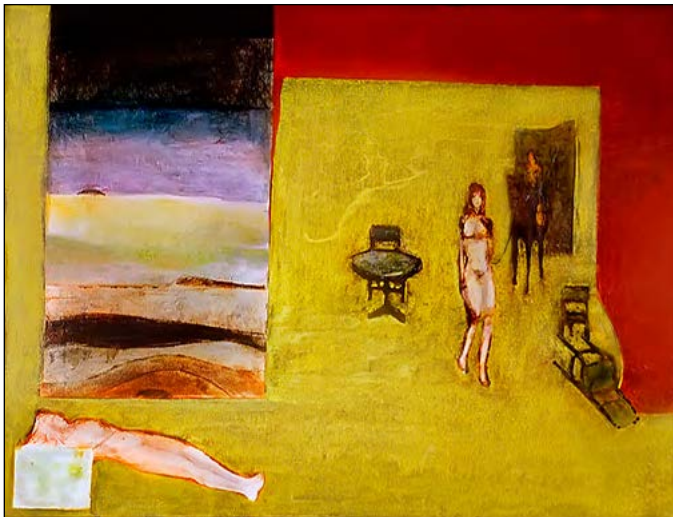
Prints



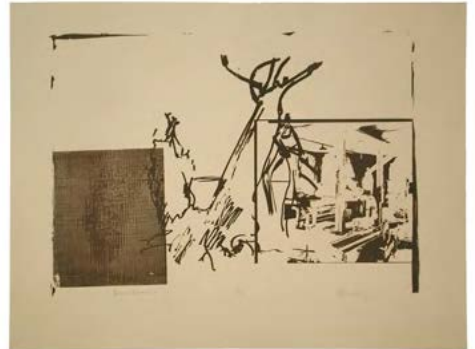
*Visitors, acrylic on canvasboard
24 x 18 in., 1978*



Juxtapositions (ed. 25), serigraph, 17x 1 in., 1977



End of the Line, acrylic, 34 x 42 in., 1979



Heraclitus (ed. 14), serigraph, 18 x 24 in., 1977

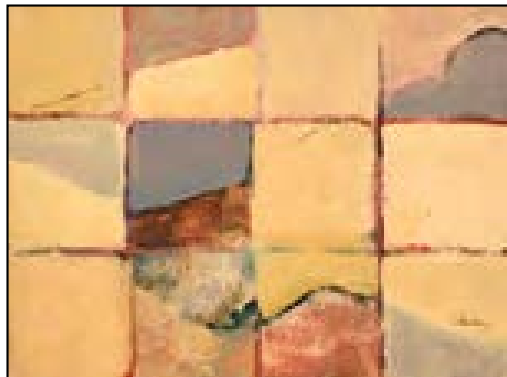
Grid | Nature

A conflict between the suggested order of the grid and the sweet curves of nature.

1979-1980



*Eyegates Study, acrylic on canvas paper,
12 X 16 in., 1979*



*Eyegates Reclining, acrylic on canvas paper,
12 X 16 in., 1979*



Eyegates 1, acrylic, 36 x 48 in., 1979



Eyegates 2, acrylic, 36 x 46 in., 1979



Eyegates 7, acrylic, 46 x 36 in., 1979



Eyegates 8, acrylic, 46 x 36 in., 1979



Eyegates 9, acrylic, 46 x 36 in., 1980



Eyegates Zones, acrylic, 46 x 60 in., 1980

Boundaries | Borders

Based on a realization that the world I perceive is bounded by horizons that I cannot see past, but from which come influences that create and alter my world
1982-1992



Fossils of the Thought, acrylic, 36 x 44 in., 1982



Ground (Of Being Unused), acrylic, 36 x 48 in., 1982



Labyrinth, acrylic, 36 x 48 in., 1982



Traces, acrylic, 36 x 48 in., 1982



Time Sonata, acrylic, 36 x 48 in., 1982

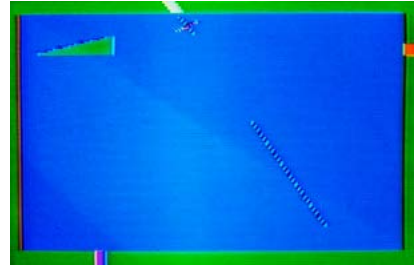


Recondite, acrylic, 36 x 48 in., 1982



*Glimpse to Be, pastel over
aquatint, 9 x 9 3/4 in, 1983.*

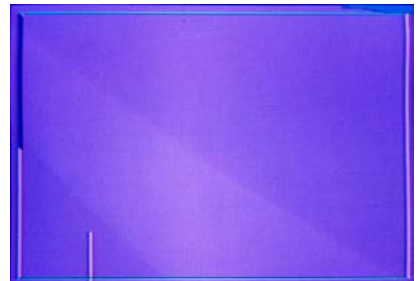
Prints



*Daynight, Cibachrome computer
(ed.25), 8 x 10 in., 1983*



*Sublime, , Cibachrome computer
(ed.25), 8 x 10 in., 1983*



*Void Event,, Cibachrome computer
(ed.25), 8 x 10 in., 1983*

Boundaries | Borders (cont'd.)



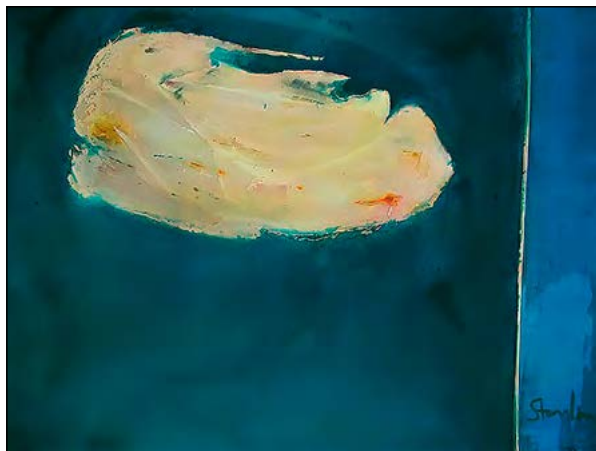
Mixed Territories, acrylic, 36 x 48 in., 1983



Birth Edge, acrylic, 36 x 48 in., 1989

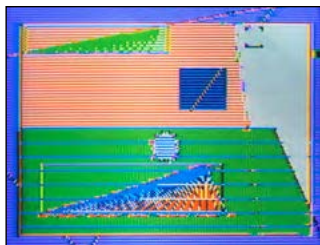


A Genesis, acrylic, 36 x 48 in., 1991



Adrift, acrylic on canvas, 36 x 48 in., 1991

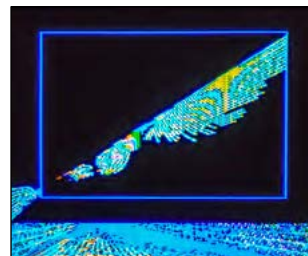
Prints



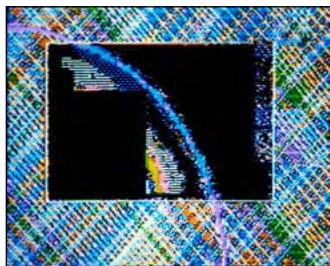
Dayspring, Cibachrome computer (ed.25), 8 x 10 in., 1983



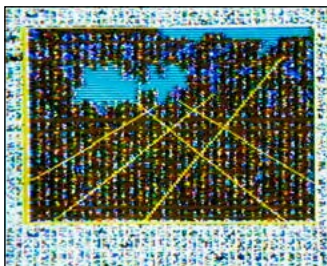
Morning Hint, Cibachrome computer (ed.25), 8 x 10 in., 1986



Vespers Light, Cibachrome computer (ed.25), 8 x 10 in., 1986



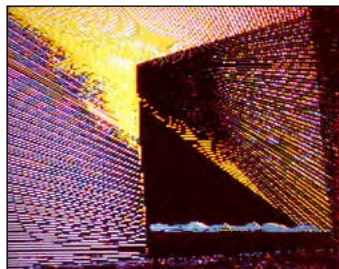
Time Weave, Cibachrome computer (ed.25), 8 x 10 in., 1987



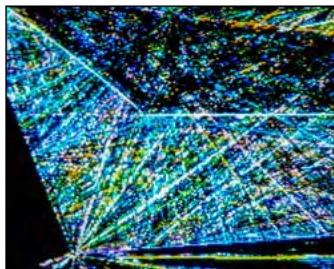
Seede Horizon, Cibachrome computer (ed.25), 8 x 10 in., 1988



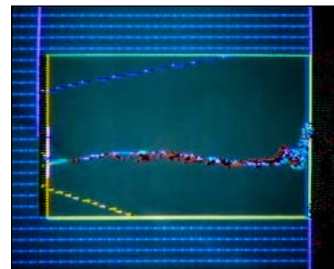
Space.but, Cibachrome computer (ed.25), 8 x 10 in., 1989



Helix Quick, Cibachrome computer (ed.25), 8 x 10 in., 1990



Subtle Entry, Cibachrome computer (ed.25), 8 x 10 in., 1992



Some, archival computer print (ed.50), 12 x 16 in. or 24 x 32 in., 1992

The Empty Center— Chaos and Order

Realizing that a fixed point of view or center of interest was impossible, an exploration began, of fragments with an empty center, yet a suggestion of possible relationships and order in the inherent chaos.
1993-2015



Woman In Gallery, acrylic, 36 x 48 in., 1993



Comments, acrylic, 36x48 in., 1994



Natural Visions, Lives, acrylic, 24x24 in., 1995



Man Attending Now, acrylic, 36 x 48 in., 1996



Chiaroscuro, acrylic, 36 x 48in., 1997



Pieces, acrylic, collage on canvas, 35x35 in., 1998

Prints



Sunset Viscera, (ed. 50), archival computer print, 12 x 16 or 24 x 32in., 1995



Vision Narratives (ed. 50), archival computer print, 12 x 16 or 24 x 32in., 1996



Mind (ed. 25), Cibachrome print, 8x10 in., 1997

The Empty Center—Chaos and Order (cont'd)



Reveries Once and Again Real, acrylic, 21 x 30 in., 1999



Offshore, acrylic, 48 x 36 in., 2001



Elation, acrylic, 24 x 36 in., 2004



Man World Image, oil and collage, 24 x 30 in., 2005



Nearly Simultaneous, acrylic and paper on canvas, 36 x 48 in., 2006



Palimpsest, acrylic, canvas collaged over real leaf, on canvas, 36 x 48 in., 2006



Three Or, acrylic, 24 x 30 in., 2006

Prints



Known and Not Known (ed. 50), archival computer print, 24 x 32 in., 1998



Homage Einstein Heraclitus (ed. 50), archival computer print, 24 x 32 in., 2007



Keeping in Touch (ed. 50), archival computer print, 24 x 32 in., 2008

The Empty
Center—Chaos
and Order
(cont'd)



Not Known, acrylic, pastel, collage on canvas, 36 x 24 in., 2008



I Am Smiling, acrylic, charcoal, collage on canvas, 24 x 24 in., 2009



Tentative, acrylic and collage on canvas, 24 x 20 in., 2012



Celebration, acrylic and chalk on canvas, 36 x 36 in., 2013



Tuition, acrylic and pastel on canvas, 60 x 48 in., 2014



The Beginnings of Wisdom, acrylic and collage, 24 x 18 in., 2014

Prints



Thought of a Thought (ed.50) archival computer print, 24 x 32 in., 2014



Scribbles, (ed.50), archival computer print, 24 x 32 in., 2014



Long Arch (ed.50), archival computer print, 24 x 32 in., 2014

Timeline

An inspiration came, out of nowhere, as a study. After several months, the idea of birth to death, beginning-to-end took over as a main focus. The works flowed left to right in a ground of the flux of time and matter.
2015-2017



Traverse, acrylic on canvas, 36 x 48 in., 2015



*Affirmations In Time,
acrylic and collage on canvas, 36 x 48 in., 2016*



Timeline, acrylic and collage, 36 x 48 in., 2016



*Chance and Done, acrylic, charcoal, and collage on canvas,
36 x 48 in., 2016*



Universe, Flow, Particulars,
acrylic and collage on canvas, 20 x 24 in., 2016



Sensing Yet Hidden,
acrylic and collage on canvas, 18 x 24 in., 2017

Prints



Certain Shadows, archival computer print
(ed. 50), 12 x 16 in. or 24 x 32 in., 2015



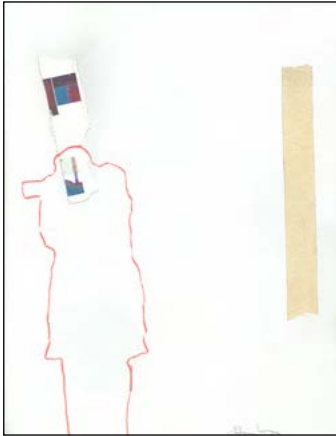
Cradle to Grave, archival computer print (ed. 50),
12 x 16 in. or 24 x 32 in., 2016



Time Marks, archival computer print (ed. 50), 24 x 32 in.,
2016

Progression

Early in 2017, the work drifted away from a beginning-to-end process/timeline, focusing on just one aspect of the timeline, such as the young artist trying to find his footing, or a muse at work. 2017-



Dichotomies-Art, Idea, Reality,
pencil, ink, collage, tape on paper,
9 x 12 in., 2018



Ingress, acrylic charcoal collage on canvas, 36 x 48 in., 2017



Aspects of Factors, archival computer print (ed. 50), 24 x 32 in., 2017



A General Story, acrylic and collage on canvas, 36 x 48 in., 2019



Heraclitus, Apollo, Dionysus,
acrylic, charcoal on canvas, 36 x 48 in., 2020



A Ponder, computer print on canvas, 35 in., 2020

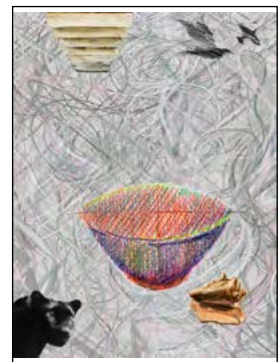
Prints



Inquiry-Study, inkjet on paper, 8 x 10 in., 2017



Conclusion of the Moment 1/50, archival computer
print (ed. 50), 12 x 16 in. or 24 x 32 in., 2018



Everywhere, archival computer print (ed. 50), 16
x 12 in. or 32 x 24 in., 2020

Through all the changes, a thread appeared. "You can never step into the same river twice." Change is constant in our environment, yet an order suggests itself. Cosmos and Chaos, Order and Randomness jostle each other throughout each style, visually and conceptually.

robertstanleyart.com

robert@robertstanleyart.com



Las Meninas, acrylic & collage, 48x36 in.